



HE ROMARIN VERBENONE

LOT N° : LA2201915

Résultats d'analyse / Results

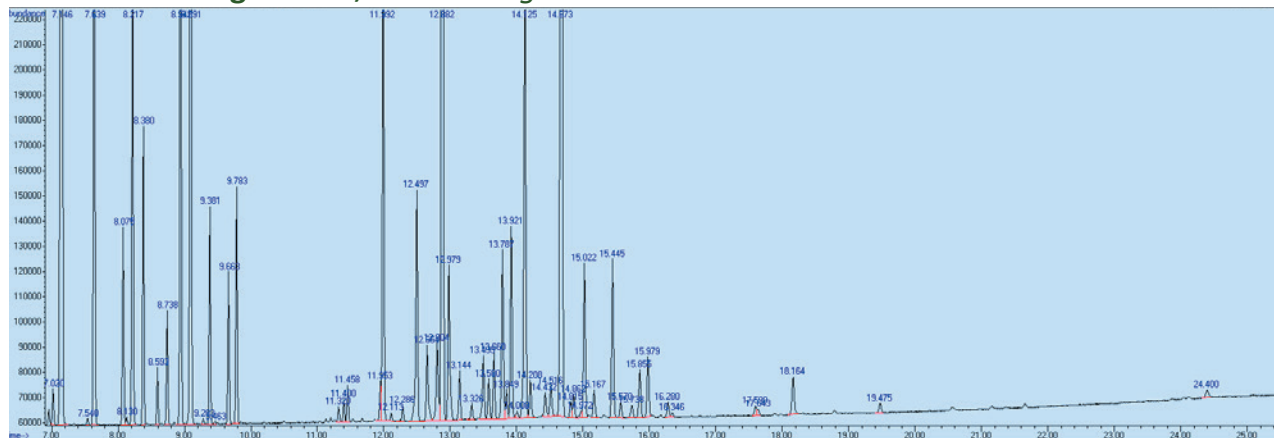
Principaux composants / Main components	Concentration (%) Content	TR (min) Retention time	N° CAS CAS number
TRICYCLENE	0,20	7,017	000508-32-7
ALPHA-PINENE	36,09	7,143	000080-56-8
CAMPHENE	3,58	7,641	000079-92-5
BETA-PINENE	1,06	8,076	000127-91-3
VERBENENE	2,58	8,219	000000-00-0
MYRCENE	1,45	8,379	000123-35-3
ALPHA-PHELLANDRENE	0,29	8,591	000099-83-2
ALPHA-TERPINENE	0,58	8,740	000099-86-5
LIMONENE*	3,81	8,940	005989-27-5
CINEOLE (EUCALYPTOL)	5,08	9,089	000470-82-6
GAMMA-TERPINENE	1,11	9,381	000099-85-4
PARA-CYMENE	0,78	9,661	000099-87-6
TERPINOLENE	1,21	9,781	000586-62-9
PARA-CYMENENE	0,09	11,320	001195-32-0
4-THUJANOL E	0,12	11,400	000546-79-2
FILIFOLONE	0,21	11,458	004613-37-0
ALPHA-CAMPHOLENE ALDEHYDE	0,22	11,955	000000-00-0
LINALOOL*	3,00	11,990	000078-70-6
CIS VERBENOL	0,05	12,116	018881-04-4
4-THUJANOL Z	0,09	12,287	000546-79-2
CAMPHOR	1,59	12,499	000464-49-3
ISO-PINOCAMPHONE	0,64	12,802	015358-88-0
BORNYL ACETATE	10,55	12,882	000076-49-3
TERPINEN-4-OL	1,12	12,980	000562-74-3
CIS VERBENYL ACETATE	0,32	13,146	1000195-66-0
CIS VERBENOL	0,45	13,500	018881-04-4
TRANS PINO CARVEOL	0,43	13,661	000547-61-5
TRANS-VERBENOL	1,18	13,786	001820-09-3
ALPHA CAMPHOLENE ALCOOL ACETATE	0,21	13,849	000000-00-0
ALPHA-TERPINEOL	1,23	13,918	010482-56-1
MYRTENYL ACETATE	0,05	14,010	001079-01-2
BORNEOL	3,42	14,124	000464-45-9
VERBENONE	10,86	14,673	000080-57-9
CARVONE	0,11	14,816	006485-40-1
ALPHA CAMPHOLENE ALCOOL	1,09	15,022	000000-00-0
MYRTENOL	0,21	15,165	000515-00-4
GERANIOL*	1,10	15,446	000106-24-1
CARVEOL	0,12	15,572	000099-48-9
PIPERITENONE	0,08	17,597	000491-09-8
CIS-JASMONE	0,05	17,643	000488-10-8
METHYL EUGENOL**	0,33	18,164	000093-15-2

PRENYL BENZOATE	0,09	19,474	005205-11-8
-----------------	------	--------	-------------

*Composé reconnu comme allergène / *Allergen*

**Composé reconnu comme CMR / *CMR*

Chromatogramme / *Chromatogram*





HE ROMARIN VERBENONE

LOT N° : LA2201915

Résultats d'analyse / Results

Principaux composants / Main components	Concentration (%) Content	TR (min) Retention time	N° CAS CAS number
TRICYCLENE	0,23	7,017	000508-32-7
ALPHA-PINENE	17,47	7,143	002437-95-8
CAMPHENE	5,55	7,641	000079-92-5
BETA-PINENE	2,90	8,076	000127-91-3
SABINENE	0,09	8,133	003387-41-5
VERBENENE	1,18	8,219	000000-00-0
MYRCENE	1,62	8,379	000123-35-3
ALPHA-PHELLANDRENE	0,35	8,591	000099-83-2
ALPHA-TERPINENE	0,66	8,739	000099-86-5
LIMONENE*	4,16	8,940	005989-27-5
1,6-DIMETHYLHEPTA-1,3,5-TRIENE	0,10	9,054	1000196-61-0
CINEOLE (EUCALYPTOL)	8,41	9,094	000470-82-6
GAMMA-TERPINENE	1,58	9,380	000099-85-4
PARA-CYMENE	0,60	9,661	000099-87-6
TERPINOLENE	1,57	9,781	000586-62-9
PARA-CYMENENE	0,06	11,320	001195-32-0
4-THUJANOL E	0,26	11,400	000546-79-2
FILIFOLONE	0,15	11,457	004613-37-0
LINALOOL*	2,10	11,990	000078-70-6
4-THUJANOL Z	0,17	12,287	000546-79-2
CAMPHOR	12,40	12,499	000464-49-3
ISO-PINOCAMPHONE	1,91	12,802	015358-88-0
BORNYL ACETATE	12,31	12,882	000076-49-3
TERPINEN-4-OL	1,37	12,979	000562-74-3
3,6-OCTADIENOIC ACID, 3,7-DIMETHYL-, METHYL ESTER, (Z)-	0,11	13,094	016750-88-2
TRANS-CARYOPHYLLENE (BETA)	1,45	13,271	000087-44-5
CIS VERBENOL	0,35	13,500	018881-04-4
TRANS-VERBENOL	0,86	13,786	001820-09-3
ALPHA CAMPHOLENE ALCOOL ACETATE	0,19	13,849	000000-00-0
ALPHA-TERPINEOL	1,16	13,924	010482-56-1
MYRTENYL ACETATE	0,38	14,009	001079-01-2
BORNEOL	2,88	14,124	000464-45-9
P-MENTHA-1,5-DIEN-8-OL	0,20	14,210	001686-20-0
EXO-2-HYDROXYCINEOLE ACETATE	0,11	14,444	000000-00-0
VERBENONE	10,35	14,673	000080-57-9
CARVONE	0,14	14,816	006485-40-1
ALPHA CAMPHOLENE ALCOOL	0,84	15,022	000000-00-0
MYRTENOL	0,74	15,165	000515-00-4
GERANIOL*	0,05	15,446	000106-24-1
CARVEOL	0,07	15,571	000099-48-9

HE ROMARIN VERBENONE

LOT N° : LA2201915

PIPERITENONE	0,04	17,597	000491-09-8
METHYL EUGENOL**	0,04	18,164	000093-15-2

*Composé reconnu comme allergène / *Allergen*

**Composé reconnu comme CMR / *CMR*

Chromatogramme / *Chromatogram*

